

Resetting Revolution IP Address

When receiving Revolution product for repair, the IP address set by the customer is often unknown. The IP address can easily be reset to the factory default static address by following the steps below.

Factory Default Static IP 192.168.178.178

1. Remove power from the Revolution unit.
2. Strap pins GND + 1 + 8 on the rear panel Logic Inputs.
3. Apply power to the Revolution unit and wait for the Revolution to boot (audible beep).
4. Remove the Logic Input straps.

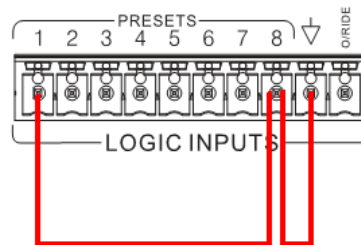


Figure 2 - Reset Revolution IP Address

The unit IP address should now be set to 192.168.178.178

When connecting a PC/Laptop to the Revolution unit, the PC should be configured with a static IP address of 192.168.178.170 as shown below.

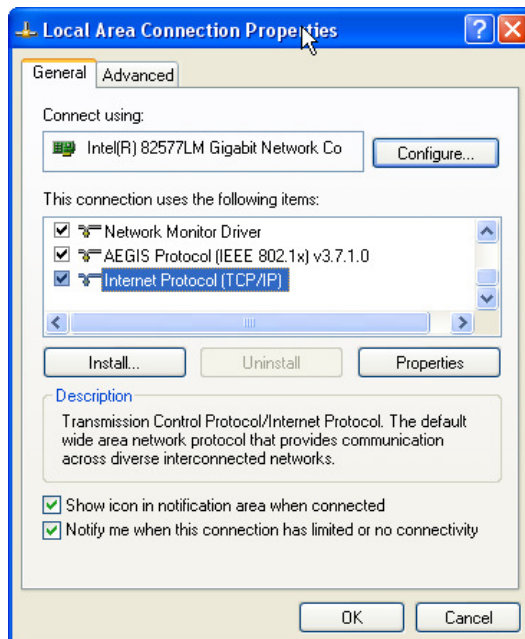


Figure 3 - XP Network Settings

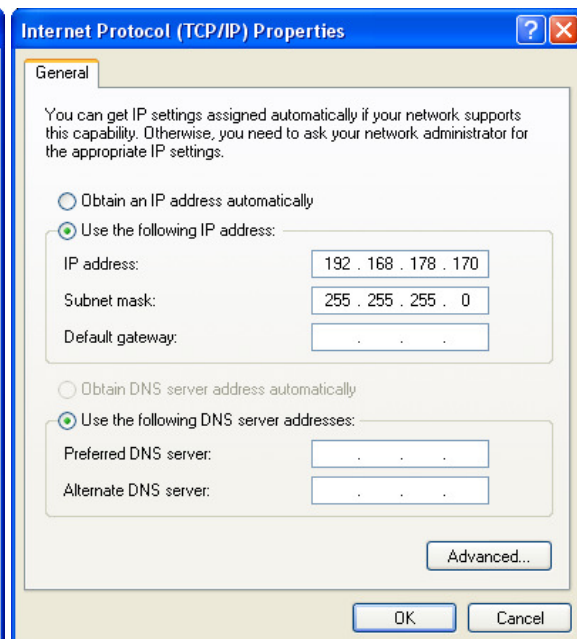


Figure 4 - TCP/IP Static Address