

### About this Update

This update provides several improvements addresses several software issues:

- i. The RS485 ICON-CP network is now initialized much quicker, within 1 second of booting.
- ii. Network Subnet Mask and Default Gateway user parameters added to Static IP setup (not implemented with DHCP).


When updating Zone Revolution Firmware from versions earlier than 2.13, this update also implements a hardware watchdog timer and requires a single jumper to be fitted to the DSP board.

### Version Information

Software Component	Version	Developer Release	Download File
Zone Revolution Software GUI	2.20	13 February 2012	Zone-REV_install-2.2.0.exe
Zone Revolution Firmware	2.13	13 February 2012	ZONE-Update-2-13.upd

### Parts Required

The following part is only required when upgrading Firmware from versions earlier than 2.13.

Qty	Description	Element14 Part #	Image
1	2mm jumper	510944	

### Tools Required

Philips screwdriver & an anti-static wrist strap

### Important Information

#### Save the device configuration before upgrading the firmware

The loaded configuration data is cleared when updating the firmware. Save the device configuration before updating the firmware.

Open the Zone Revolution Application; connect to the Zone Revolution and save the existing configuration to your computer before proceeding with the firmware upgrade.

The current configuration may be saved by selecting File→Save existing Config to Disk.



### Update Instructions

#### How to install or upgrade the Software GUI:

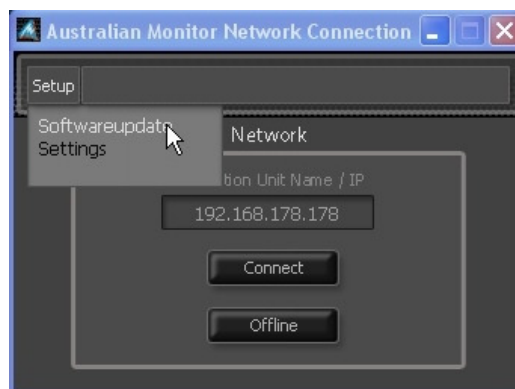
1. Remove any previously installed version of the Zone Revolution Application.  
This is achieved by running:  
Windows Start Menu → All Programs → Australian Monitor → ZONE-REV → Uninstall.



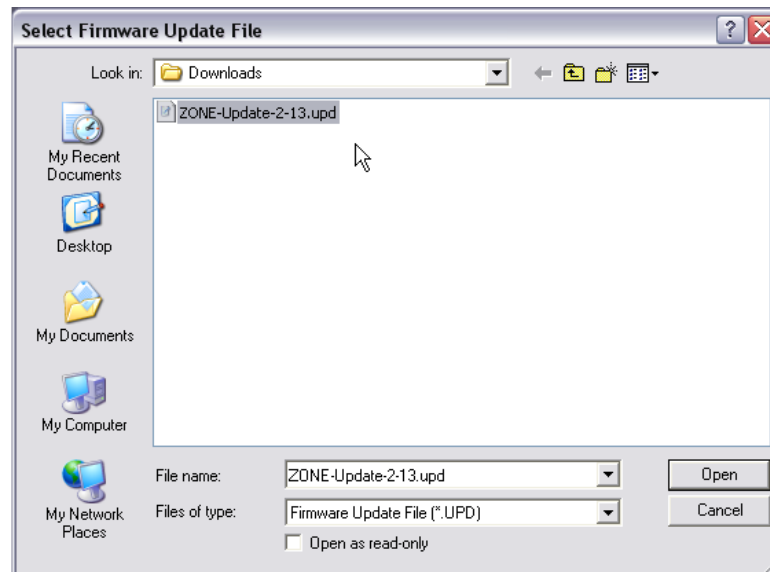
2. Download the latest ZoneRevolution software installer ZONE-REV\_install-2.2.0.exe
3. Run the installer.
4. Read the presented License Agreement and select "Accept" to proceed with the installation.
5. Once the installation is complete, the installed application may be executed from the Windows Start Menu → All Programs → Australian Monitor → ZONE-REV.

#### How to Upgrade the Revolution Firmware:

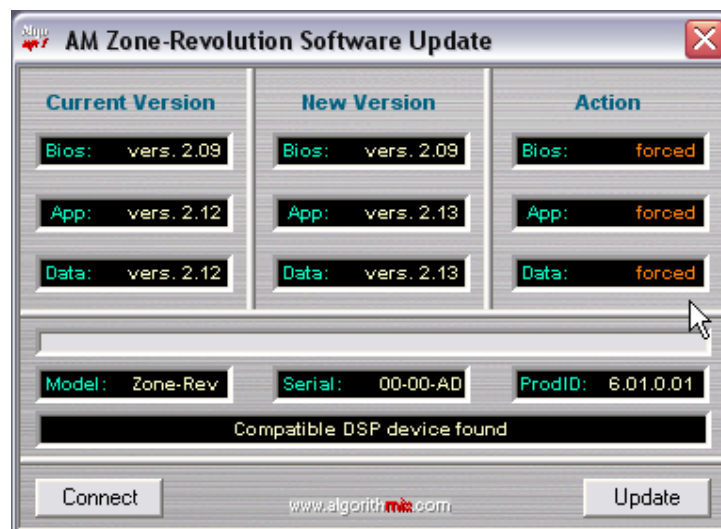
1. Download the latest AV Revolution firmware file ZONE-REV-Update-2-13.upd
2. Connect the device to be updated to your PC LAN port.
3. Close the GUI completely and reopen it but don't hit the "connect" button on the connection window
4. Go to the drop down menu at the top and select "Softwareupdate"



5. Once the file selection box opens, browse to where ever you saved the firmware file, select the downloaded firmware update, and click "Open".

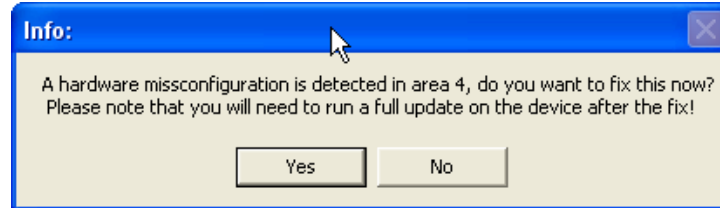


6. The following Software Update window will open and within a few seconds data indicating both the current version installed and also the new version downloaded will be provided as per the example below
7. Under "Action", click each window until "Bios", "App" and "Data" actions each indicate "forced".



8. Click the "Update" button in the lower right hand corner.
9. Click "Yes" to the update warning prompt.
10. At this point the update program will commence updating the Revolution hardware.

11. If the following prompt appears, select "Yes".



12. Once the update is complete, a prompt should appear indicating the update was successful, click "OK" and close the updater window.
13. Select "Yes" when asked "Do you want to reboot the device?"
14. Once the unit has restarted, connect with the GUI and re-load the previously saved device configuration.
15. Finally, fit a 2.00mm jumper to position JP6 as shown in the diagram on the next page (if it is not already fitted).

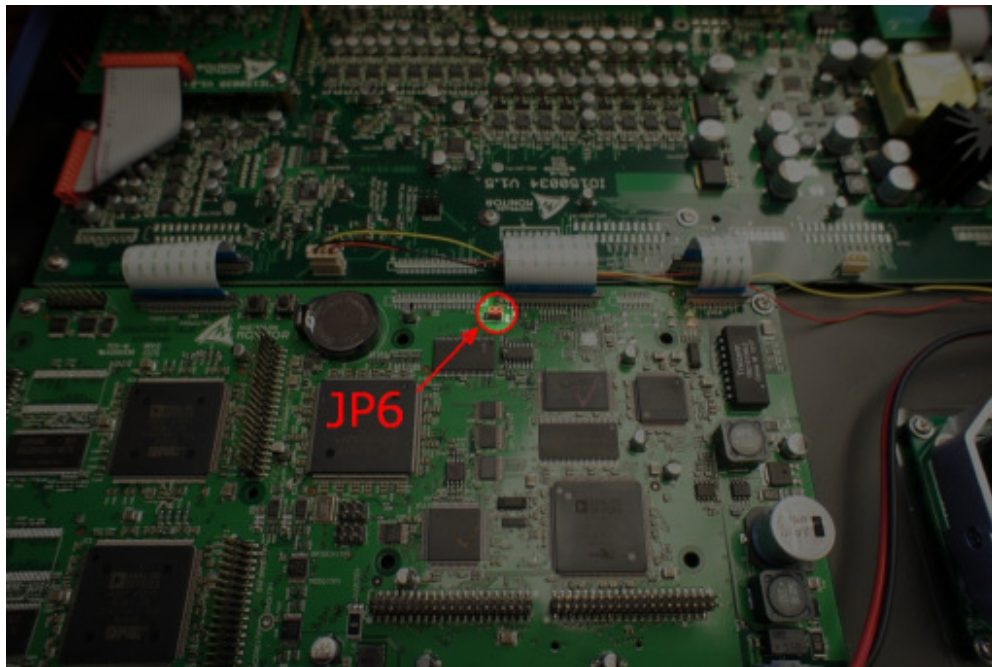
### NOTES

- i. The first connection following a firmware update will drop off-line soon after the GUI is run and connected. This is normal, simply reconnect by clicking the "DISCONNECTED" button located top-right of the GUI. This situation only occurs once following the firmware update.
- ii. Should the Revolution fail to reboot following the firmware update, cycle the power to the unit.

## Important Information

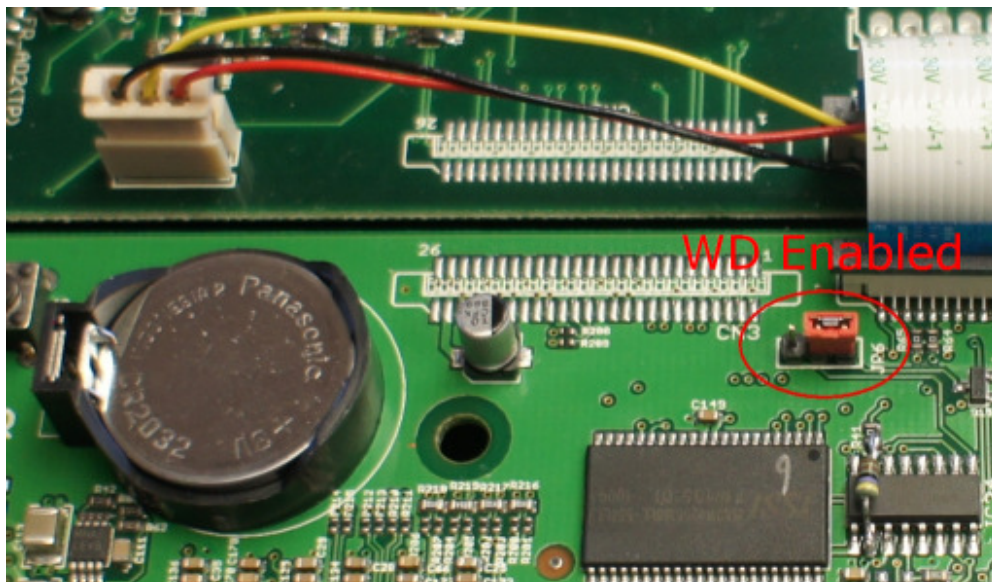


Once the Revolution firmware has been updated, do not use the older "Emergency Update" or "Revolution Firmware Recovery" tools. These tools are no longer compatible with the new firmware and GUI updater.



Locate the watchdog jumper posts JP6 and fit a 2.00mm jumper across the 2 pins furthest away from the coin battery.

NOTE: Some units may be shipped with this jumper fitted in the left hand (disabled) position; in this case simply move the jumper to the right hand position.



Fitting the watchdog jumper on devices running firmware prior to 2.13 is not supported and the doing so will result in boot failure.

### New Features

Network Subnet Mask and Default Gateway user parameters have been added to the Static IP configuration settings.

Please note that the current DHCP implementation does not support Subnet Mask or Gateway parameters. We therefore recommend the use of Static IP configurations.

