

About this Update


This update solves several data corruption issues that may be experienced following numerous power cycles.

This update also implements a hardware watchdog timer and requires a single jumper to be fitted to the DSP board.

Version Information

Software Component	Version	Released	Download File
AV Revolution Software GUI	2.18	30 September 2011	AV-REV_Install-2.1.8.exe
AV Revolution Firmware	2.15	30 September 2011	AV-REV-Update-2-15.upd

Parts Required

Qty	Description	Element14 Part #	Image
1	2mm jumper	510944	

Tools Required

Philips screwdriver

Anti-static wrist strap

Important Information

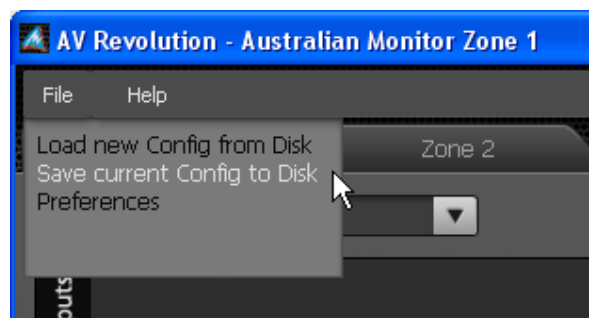


Save the device configuration before upgrading the firmware

The loaded configuration data is cleared when updating the firmware. Save the device configuration before updating the firmware.

Open the AV Revolution Application; connect to the AV Revolution and save the existing configuration to your computer before proceeding with the firmware upgrade.

The current configuration may be saved by selecting File→Save existing Config to Disk.



Update Instructions

How to install or upgrade the Software GUI:

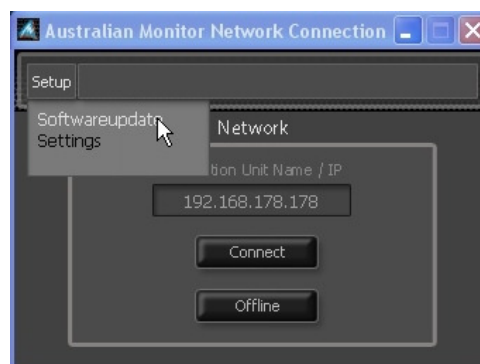
1. Remove any previously installed version of the AV Revolution Application.
This is achieved by running:
Windows Start Menu → All Programs → Australian Monitor → AV-REV→ Uninstall.



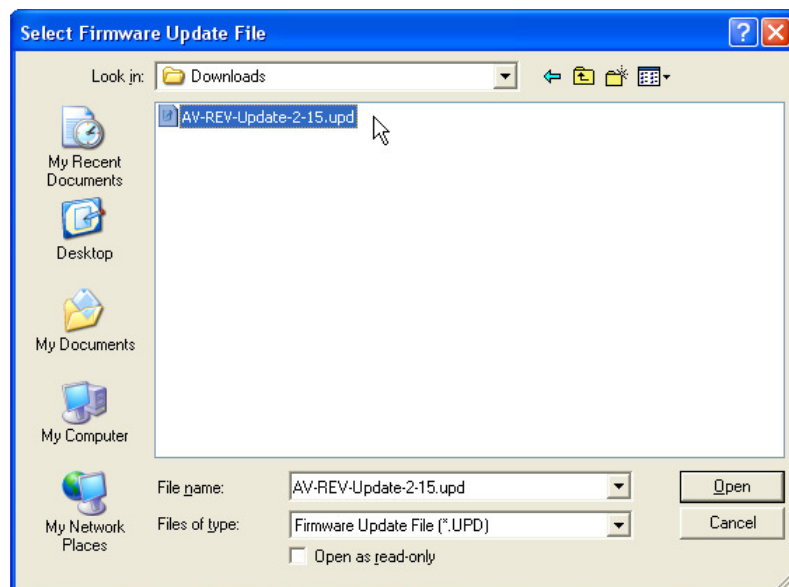
2. Download the latest AV Revolution software installer AV-REV_install-2.1.8.exe
3. Run the installer.
4. Read the presented License Agreement and select "Accept" to proceed with the installation.
5. Once the installation is complete, the installed application may be executed from the Windows Start Menu → All Programs → Australian Monitor → AV-REV.

How to Upgrade the Revolution Firmware:

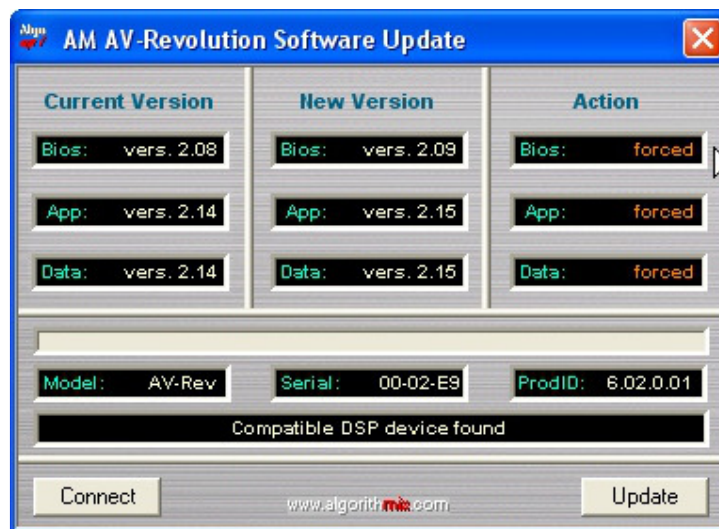
1. Download the latest AV Revolution firmware file AV-REV-Update-2-15.upd
2. Connect the device to be updated to your PC LAN port.
3. Close the GUI completely and reopen it but don't hit the "connect" button on the connection window
4. Go to the drop down menu at the top and select "Softwareupdate"



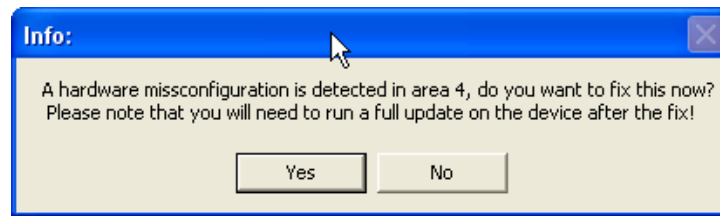
5. Once the file selection box opens, browse to where ever you saved the firmware file, select the downloaded firmware update, and click "Open".



6. The following Software Update window will open and within a few seconds data indicating both the current version installed and also the new version downloaded will be provided as per the example below
7. Under "Action", click each window until "Bios", "App" and "Data" actions each indicate "forced".



8. Click the "Update" button in the lower right hand corner.
9. Click "Yes" to the update warning prompt.
10. At this point the update program will commence updating the Revolution hardware.
11. If the following prompt appears, select "Yes".



12. Once the update is complete, a prompt should appear indicating the update was successful, click "OK" and close the updater window.
13. Select "Yes" when asked "Do you want to reboot the device?"
14. Once the unit has restarted, connect with the GUI and re-load the previously saved device configuration.
15. Finally, fit a 2.00mm jumper to position JP6 as shown in the diagram on the next page.

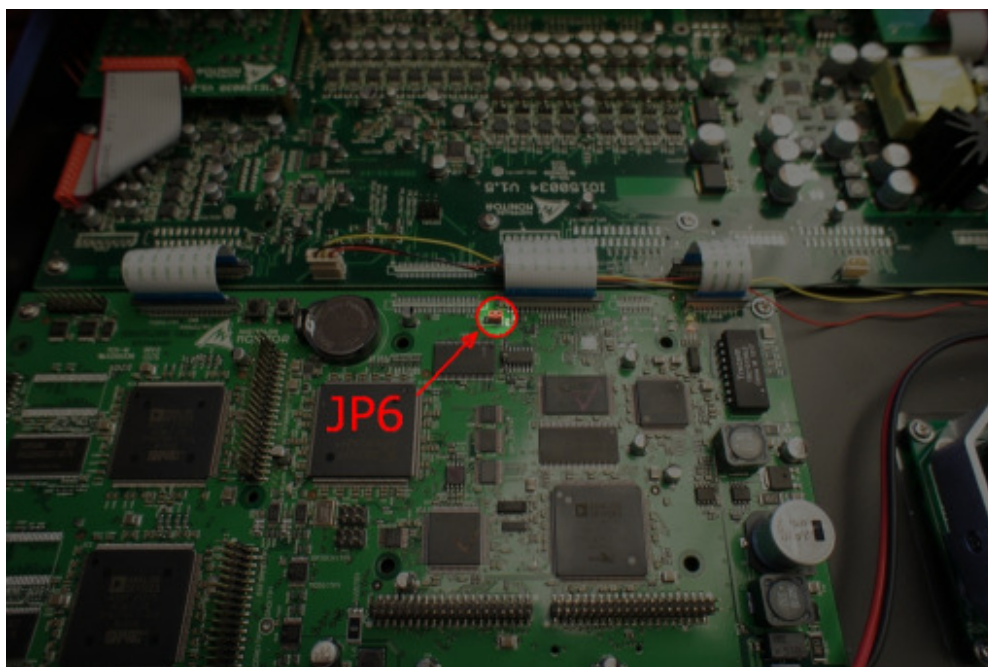
NOTES

- i. The first connection following a firmware update will drop off-line soon after the GUI is run and connected. This is normal, simply reconnect by clicking the "DISCONNECTED" button located top-right of the GUI. This situation only occurs once following the firmware update.
- ii. Should the Revolution fail to reboot following the firmware update, cycle the power to the unit.

Important Information

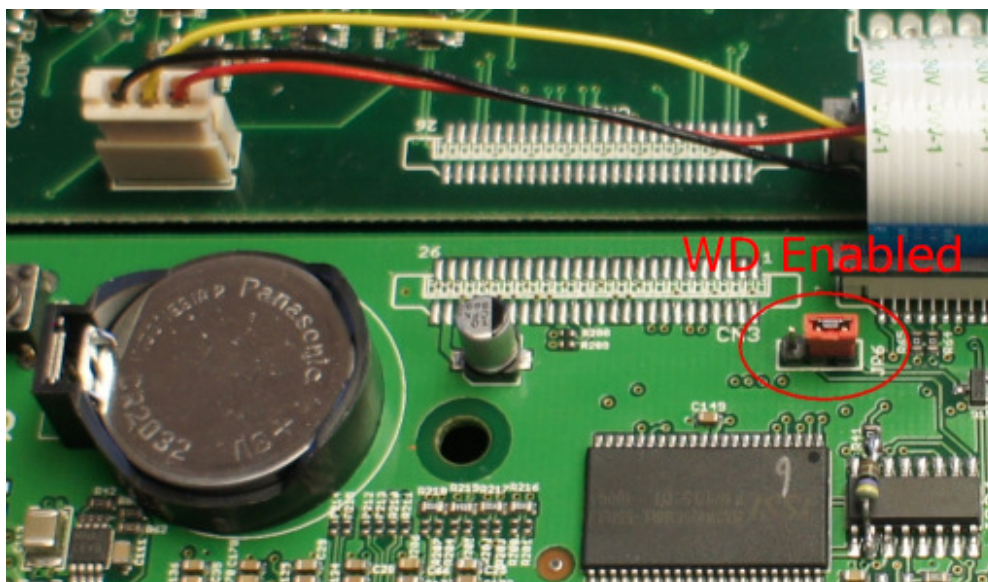


Once the Revolution firmware has been updated, do not use the older "Emergency Update" or "Revolution Firmware Recovery" tools. These tools are no longer compatible with the new firmware and GUI updater.



Locate the watchdog jumper posts JP6 and fit a 2.00mm jumper across the 2 pins furthest away from the coin battery.

NOTE: Some units may be shipped with this jumper fitted in the left hand (disabled) position; in this case simply move the jumper to the right hand position.



Fitting the watchdog jumper on devices running firmware prior to 2.15 is not supported and the doing so will result in boot failure.